



**EXTRUDED POLYSTYRENE INSULATION**

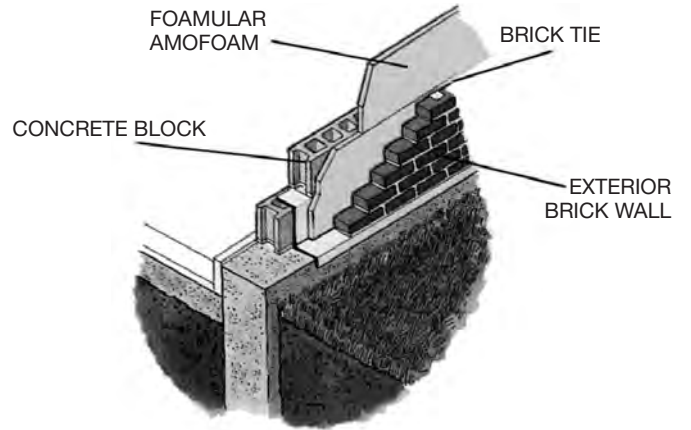
Extruded Polystyrene Insulation  
**FOAMULAR®**



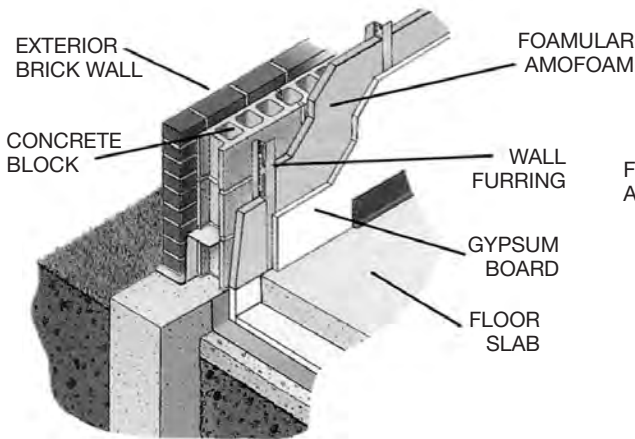
® INNOVATIONS FOR LIVING™

R-value of 5 per inch of thickness to help reduce energy costs and increase occupant comfort.

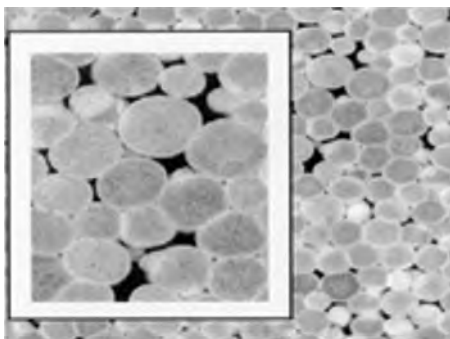
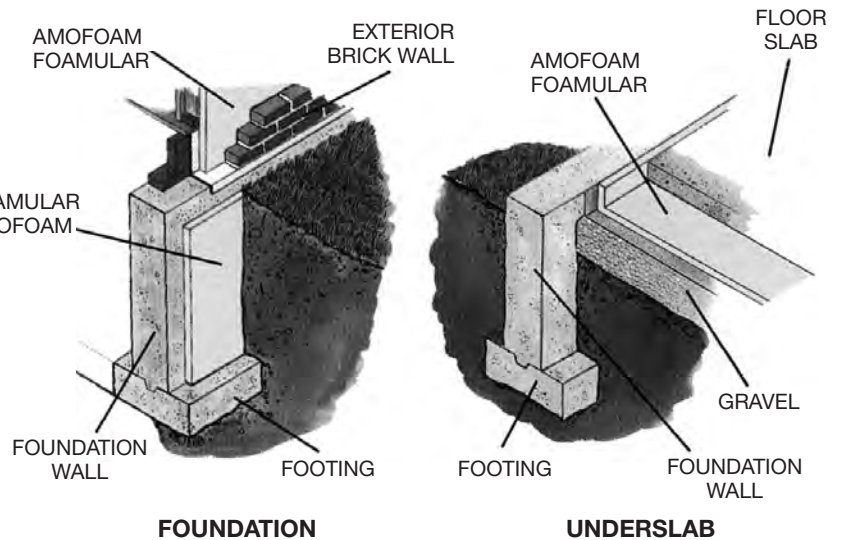
**MASONRY CAVITY WALLS**



**WALL FURRING**



**PERIMETER/FOUNDATION/UNDERSLAB**



Insulation cells substantially magnified.

**MOLDED POLYSTYRENE INSULATION**

While polymer is hydrophobic, typical "Beadboard" has a closed-cell structure within each individual bead, but voids between beads. It can be highly sensitive to water in all forms; vapor, liquid, and ice. Relatively good thermal resistance, moderate compressive and handling strength.

# MOISTOP, PROTECTIVE & CONCRETE CURING MATERIALS



## CLOSED CELL BLANKETS

Flexible curing blankets utilizing 3-5 layers of closed-cell polypropylene wrapped in a tough, waterproof covering. Lightweight and easy to handle, these blankets are superior thermal insulators with outstanding physical and chemical resistant characteristics. Available in 6' x 25' size.



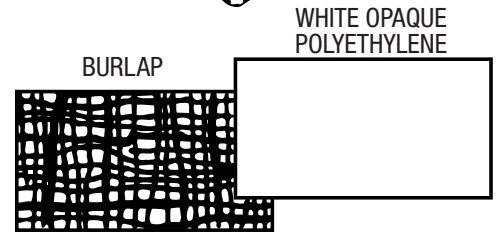
## BURLAP

Used for water curing concrete, assures uniform dispersion and allows periodic lapses in the application of water. Also used to roughen fresh concrete surfaces by wet dragging. 7½ ounce weight stocked in widths of 26, 32, 48 and 60 inches. 10 ounce weight available in widths of 24, 40, 48 and 60 inches. Rolls are approximately 100 feet long



## BURLENE

Laminated curing blanket of 10 ounce burlap and .004 inch white opaque polyethylene provides strength, water distribution, moisture retention, and reflective features. Stocked in widths of 10, 15 and 20 feet. Rolls are 100 feet long.



## REINFORCED POLYETHYLENE FILM

A lamination of two poly films reinforced with fiber cords laid multi-directional. Material is lightweight, translucent and flexible even in the coldest temperatures. Available in clear or black in rolls 10 to 40 feet wide by 100 feet long.

## POLYETHYLENE FILM

Lightweight and economical, retains its flexibility even in the coldest weather. Available in 4, 6, or 8 mil thicknesses and widths up to 40 feet wide in rolls 100 feet long.



## MOISTOP



Moistop Ultra® 15  
Water vapor permeance of .01 perms.



Moistop Ultra® 10  
Water vapor permeance of .02 perms.

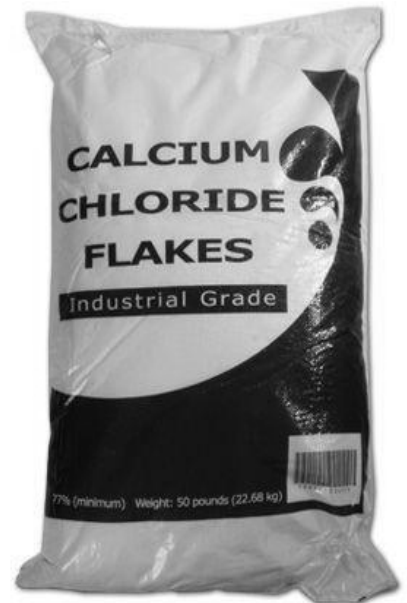
Moistop Ultra® represents a new standard for concrete underslab products. With water vapor permeance; tensile strength and puncture resistance that outperforms even thicker membranes, Moistop Ultra® exceeds ASTM E-1745-97 Class "A", "B" and "C" requirements for underslab vapor retarders. Manufactured from ISO certified virgin resins through a unique process, Moistop Ultra® is extremely durable and puncture resistant.



### Thermalay Blankets

Size	Voltage	Amperage	Weight
NEW: 6' x 25'	110 v only	17.6 amp	~39#
9' x 15'	110 or 120 v	19 or 12 amp	~39#
4 1/2 x 30'	110 or 120 v	19 or 12 amp	~39#
9' x 9'	110 v only	10 amp	~24#
4 1/2 x 15'	110 v only	8 amp	~20#
9' x 27'	220 v only	20 amp	~85#
55 gal. drum	110 v only	3 amp	~12#

### Snow Tarp (Top Down)



### Calcium Chloride